

# Repatriation Rates in Filipino Seafarers: A 3-year study of 3,882 cases



## Repatriation Study

- **2009-2012**
- **202 shipping companies  
1,981 vessels**
- **221,035 deployments**
- **age/position/vessel type/embarkation  
& repatriation dates/diagnosis/status**



# Calculating repatriation rates

	2010	2011	2012	Total
Repat Cases	1,228	1,440	1,214	3,882
Total Deployments	73,070	69,698	78,267	221,035

July2009  
June2010

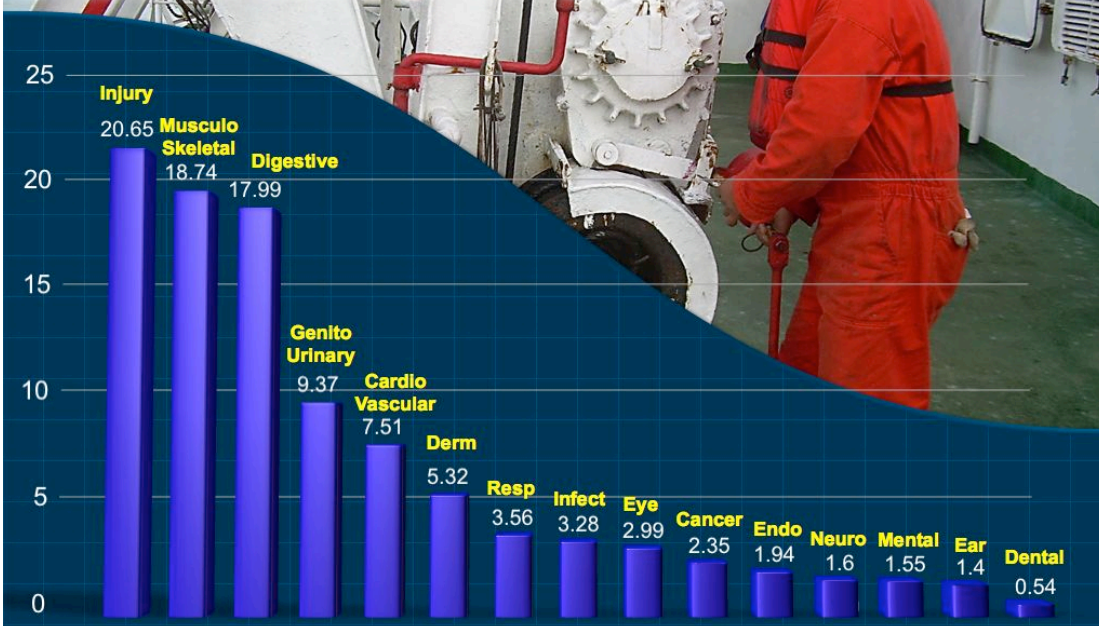
July2010  
June2011

July2011  
June2012

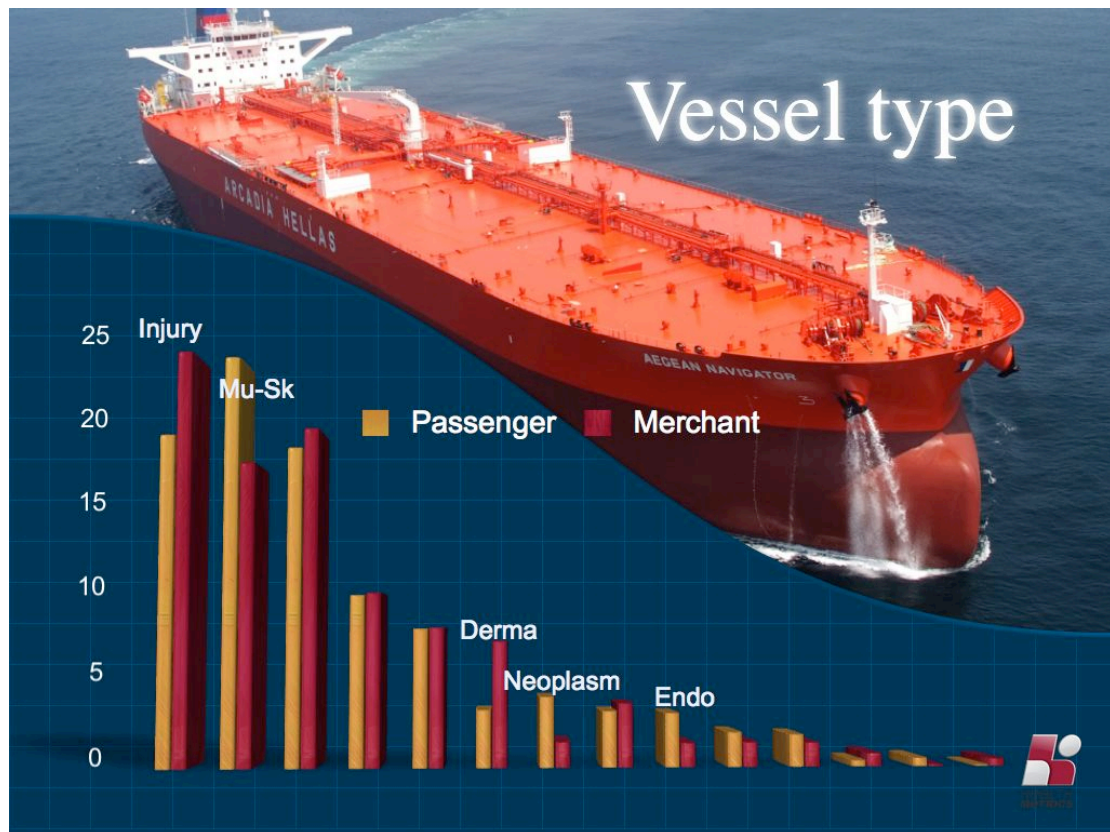
= 1.76%



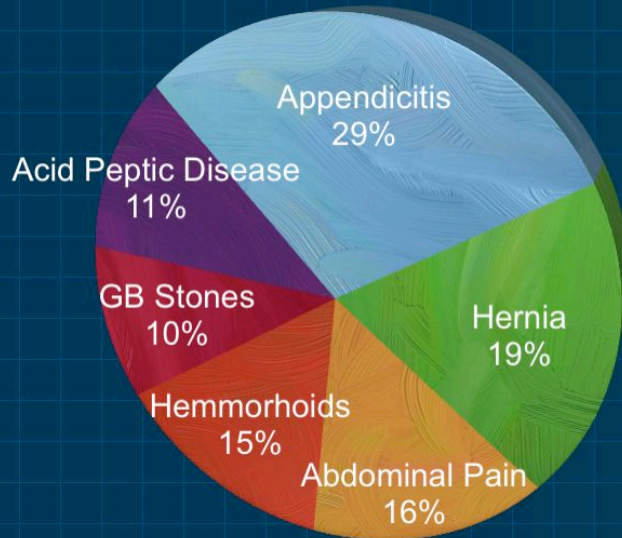
## Distribution of Cases



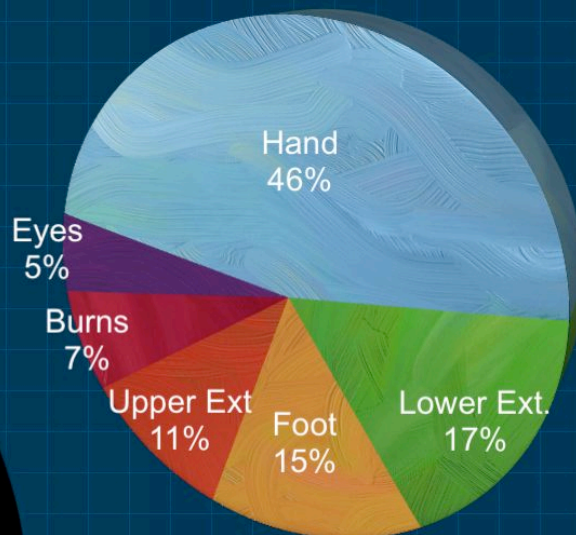




# Digestive

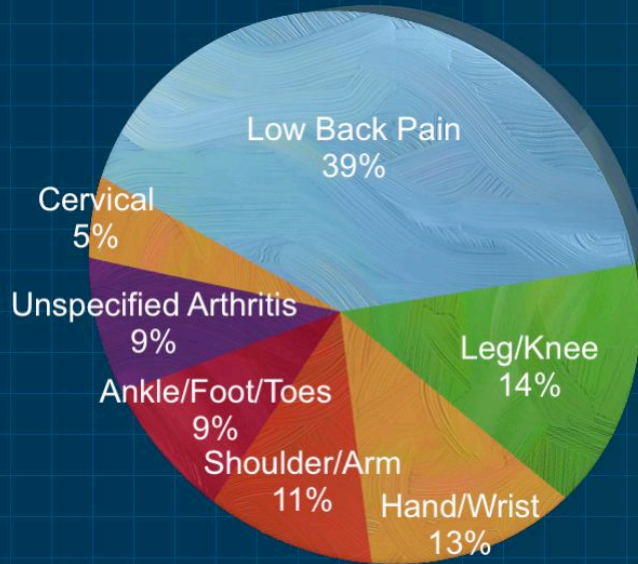


# Accidents and Trauma

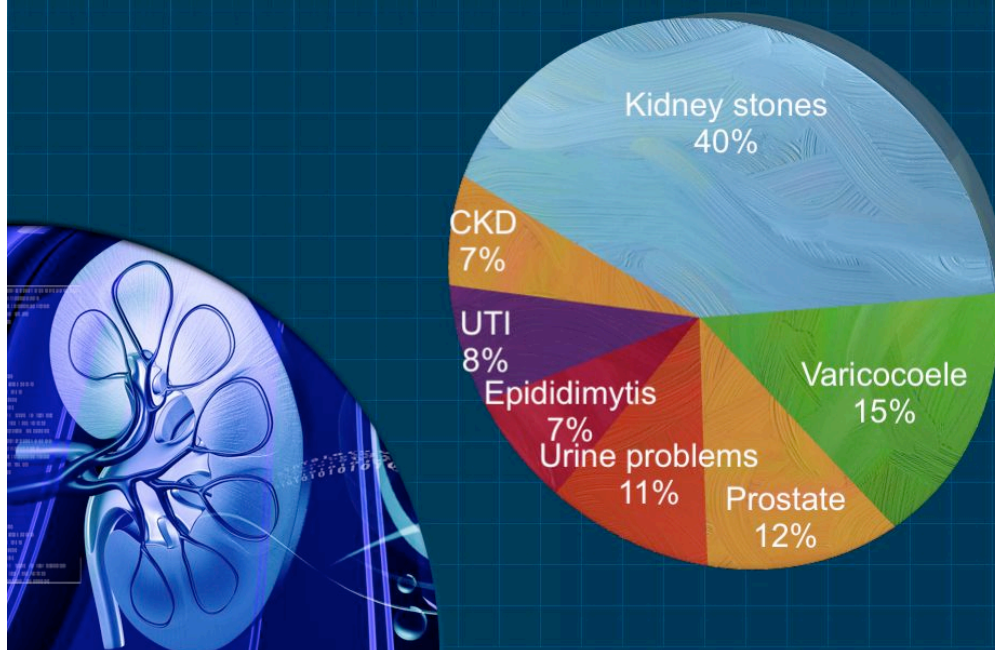




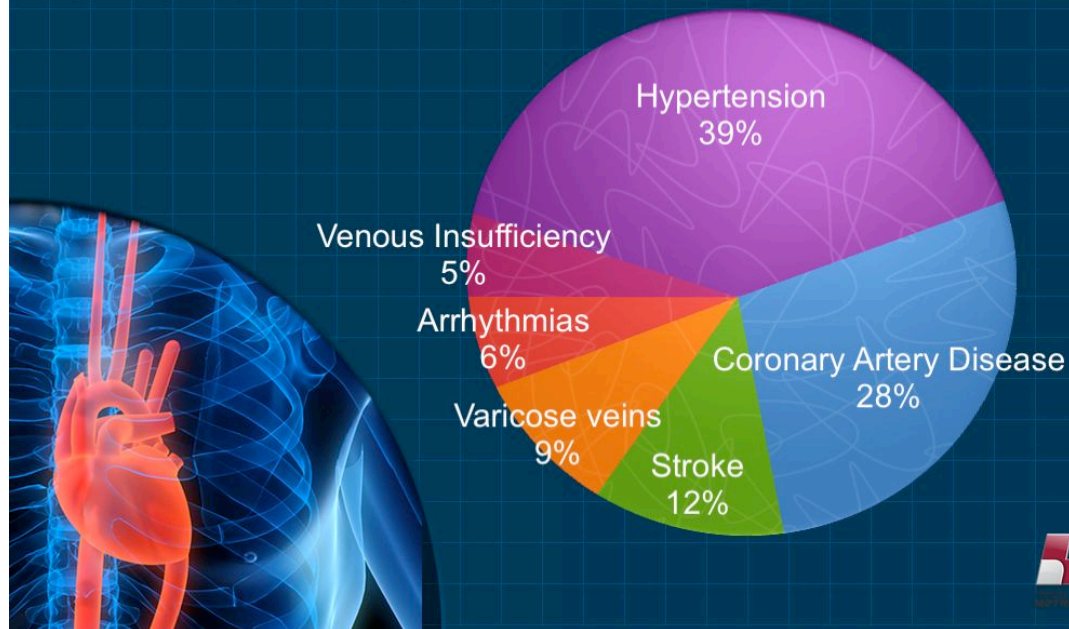
# Musculo Skeletal



# Genitourinary



# Cardiovascular

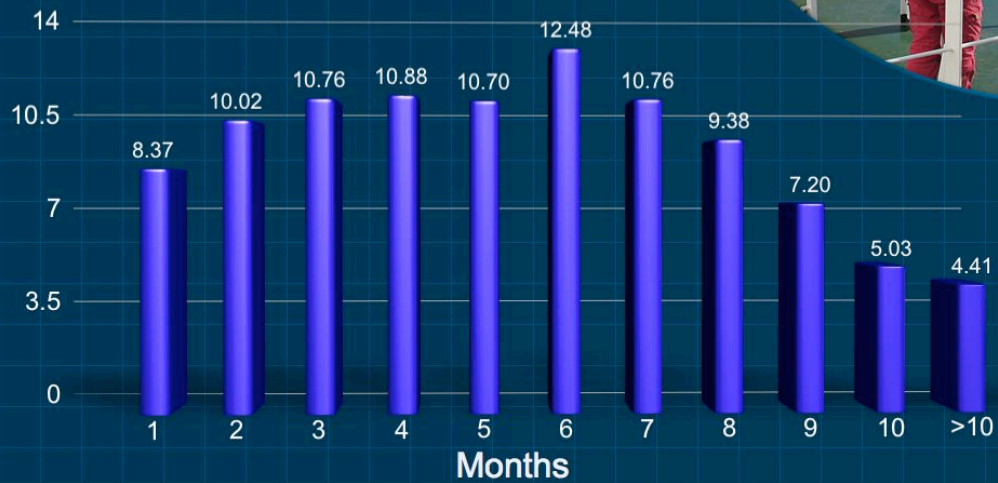


A photograph of a festive display of numerous glowing, star-shaped and circular light decorations, likely for a holiday celebration. Several people are visible in the background looking at the lights. The image is partially obscured by a dark blue curved shape on the left side, which contains a table of data.

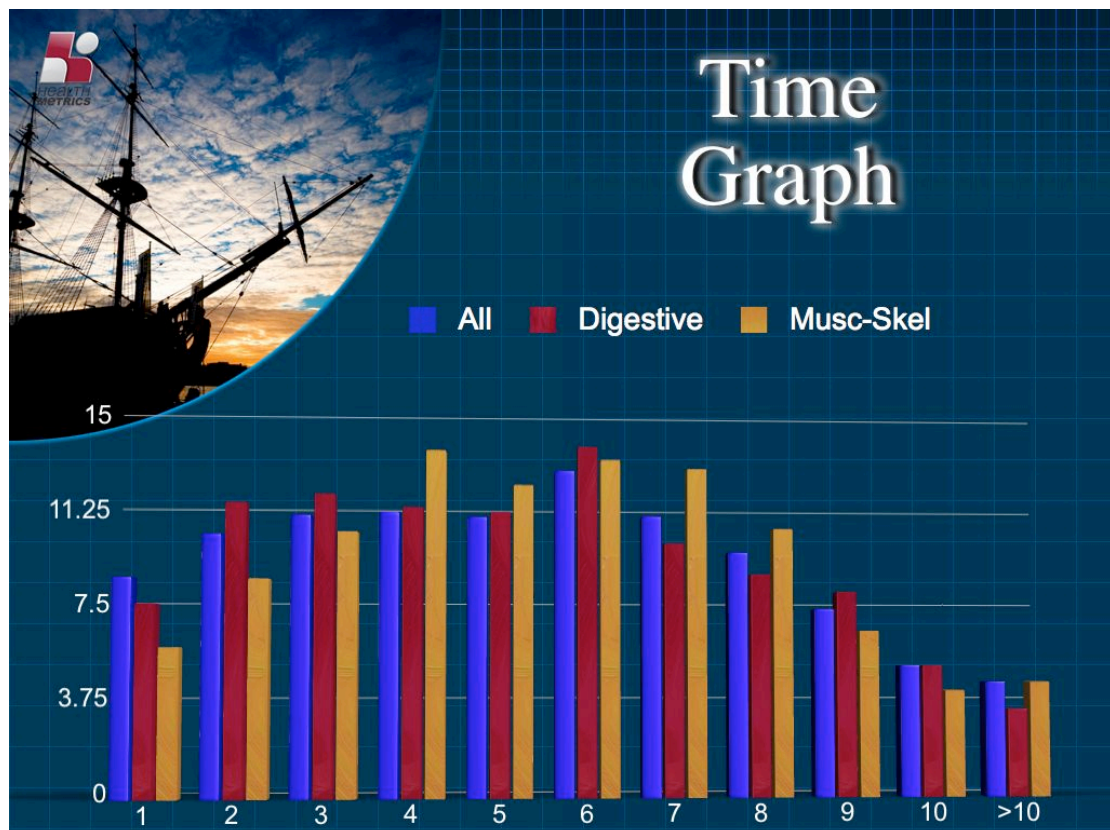
January	8.93%
February	8.30%
March	8.72%
April	8.10%
May	9.12%
June	8.83%
July	8.53%
August	8.39%
September	7.92%
October	8.51%
November	8.44%
December	8.22%

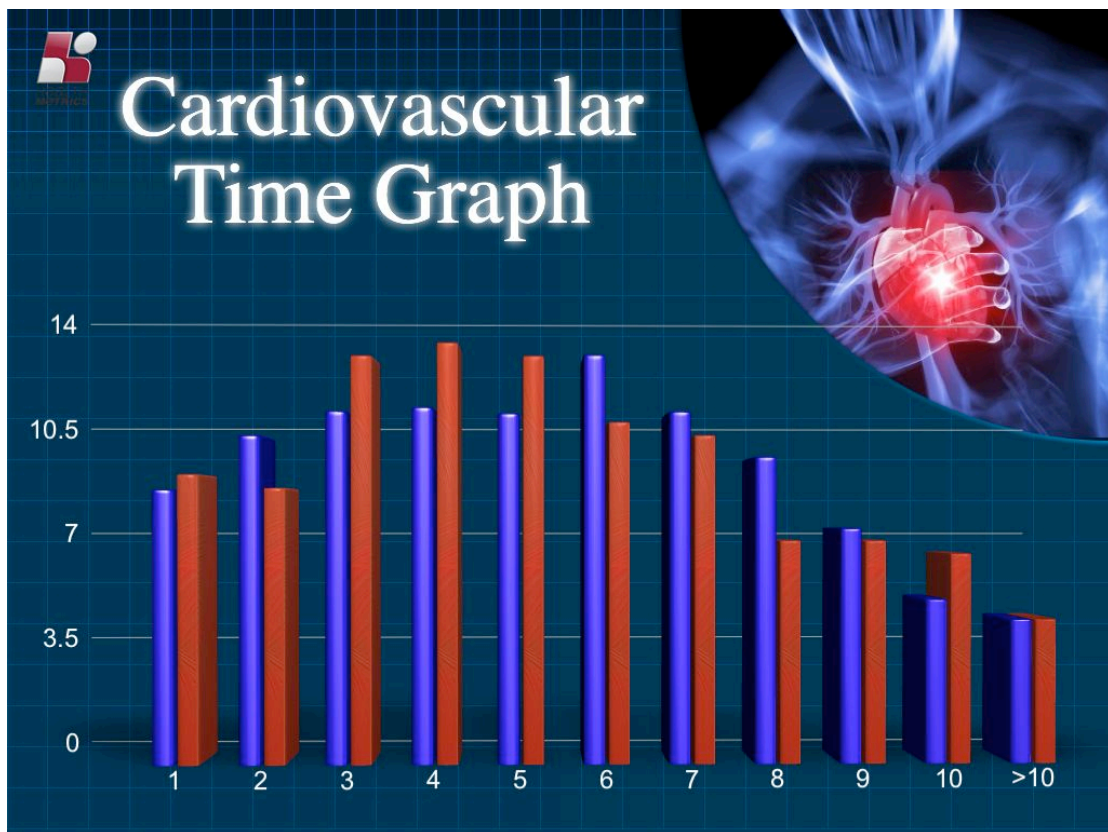
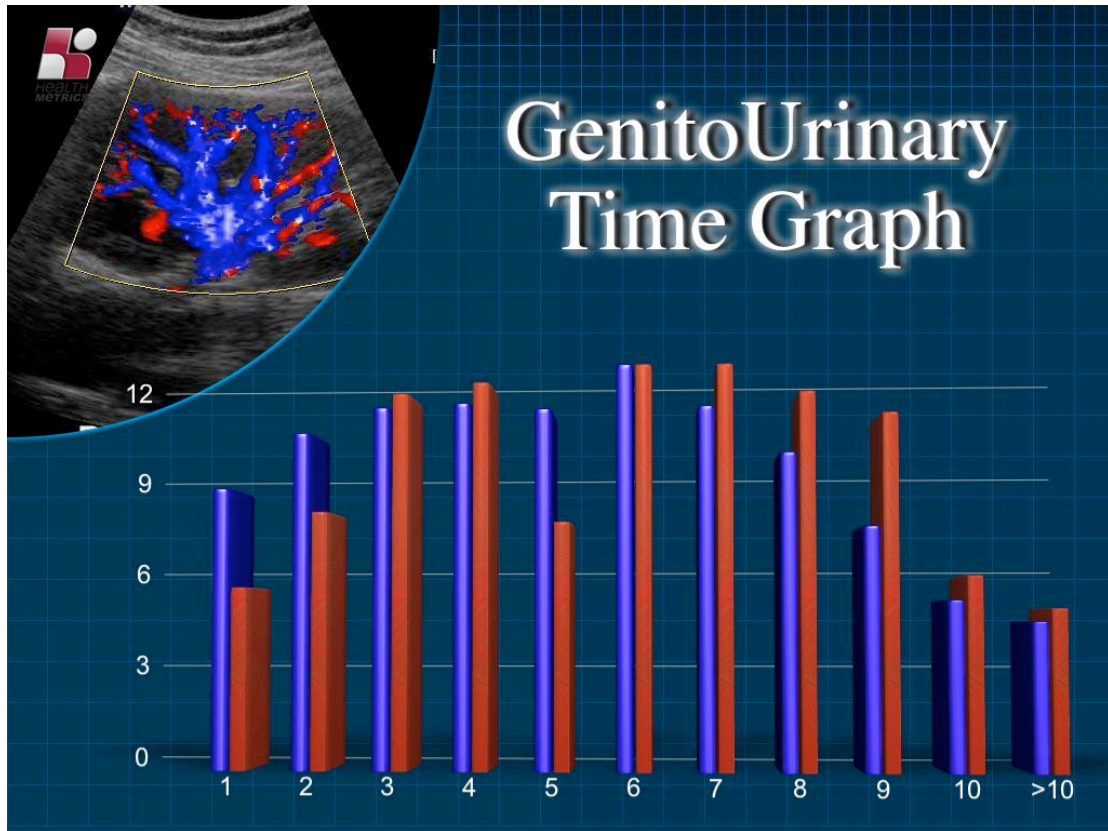


# Time Graph

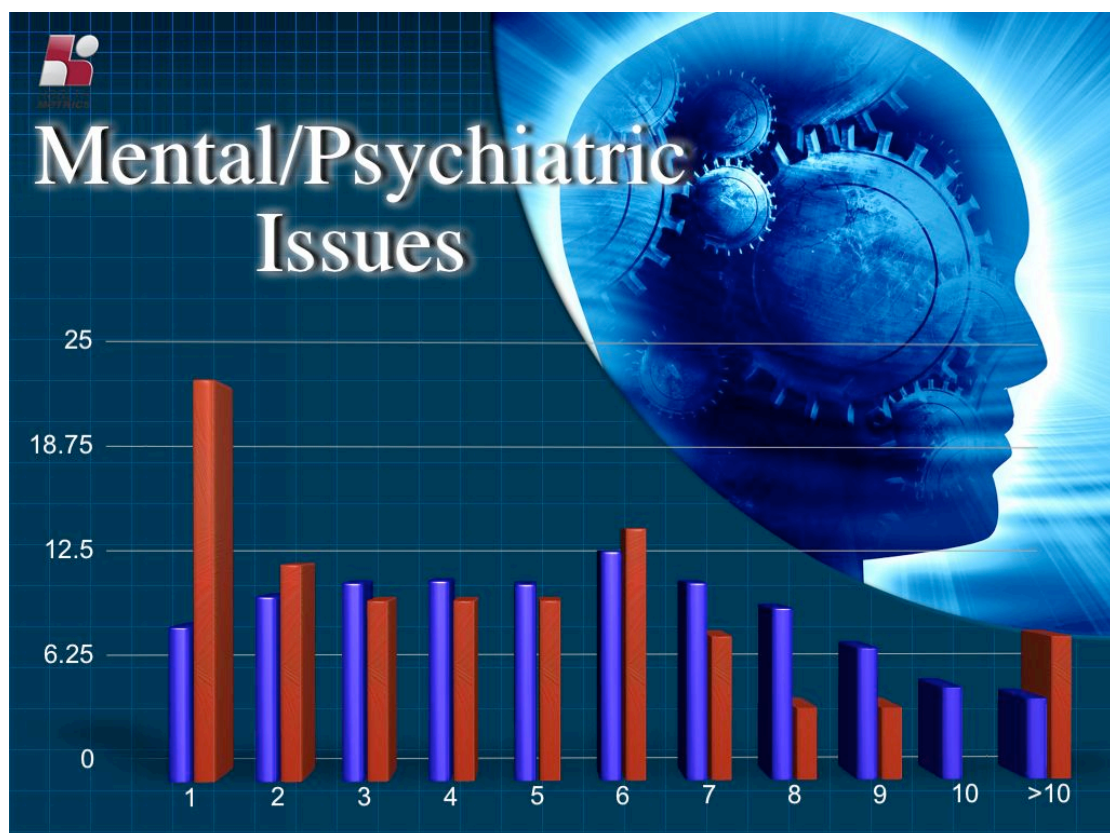
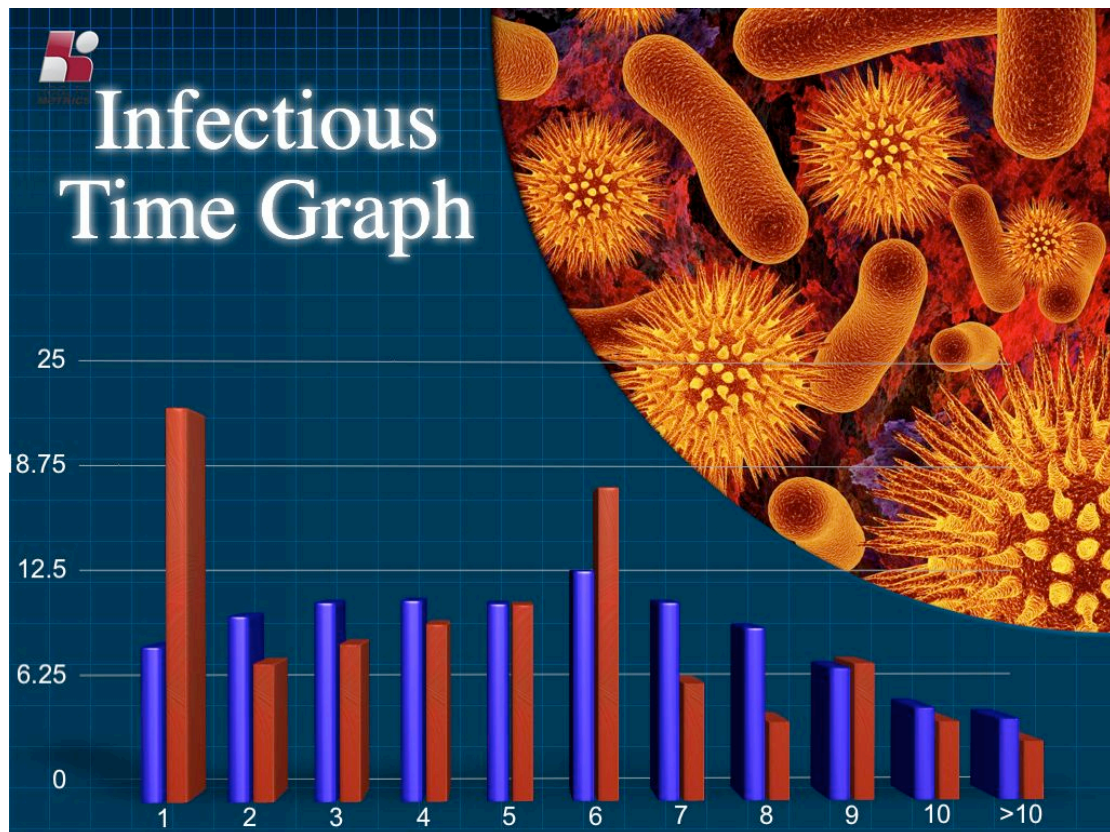


# Time Graph



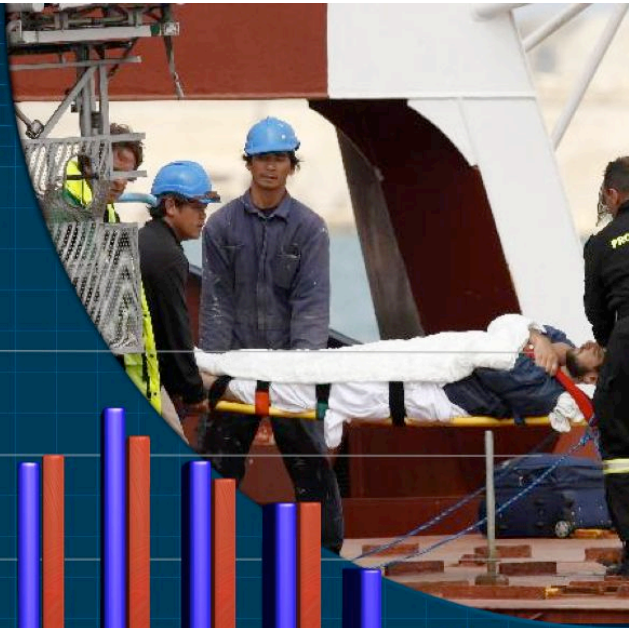
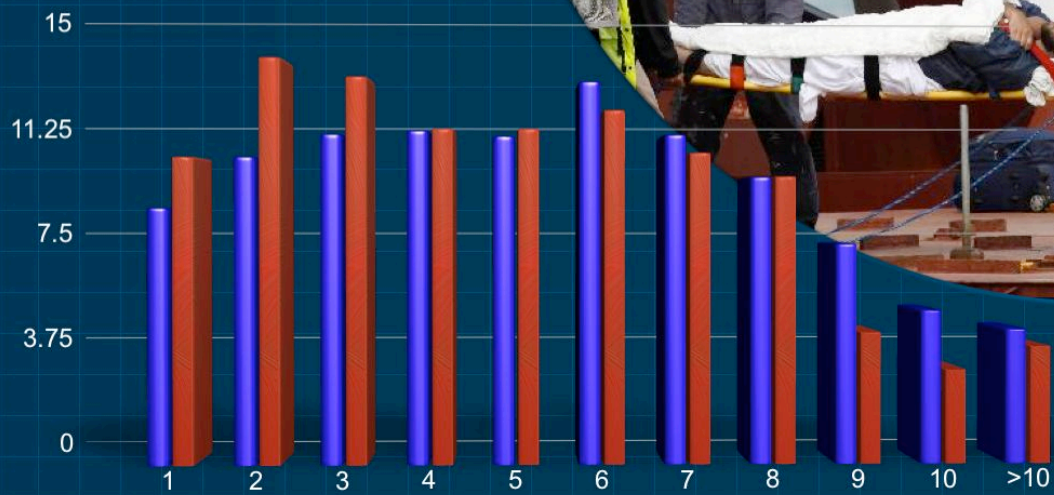




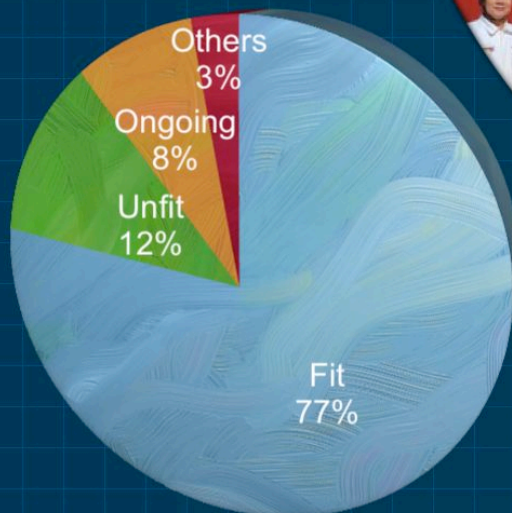




# Accidents and Injuries



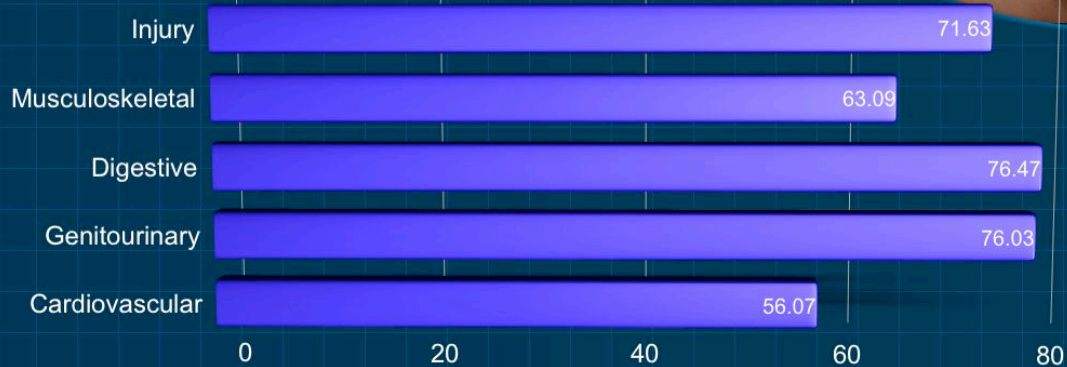
# Return to work status







# Return to work: Top 5 Systems



## Conclusions

- **1.75% repatriation rate**
- **Injuries/Musc-Skeletal account for 40% of total repatriations**
- **Emphasis on prevention**
- **Can be used as a benchmark and guide for formulation of health policies**